



# VDENEER STONE

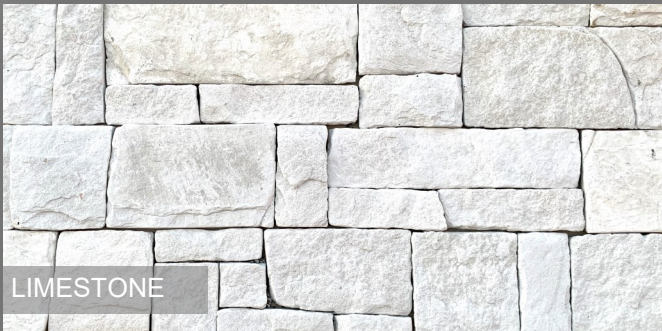
INSPIRED BY NATURE, ENGINEERED BY MAN

## Dry Stack collection technical guide

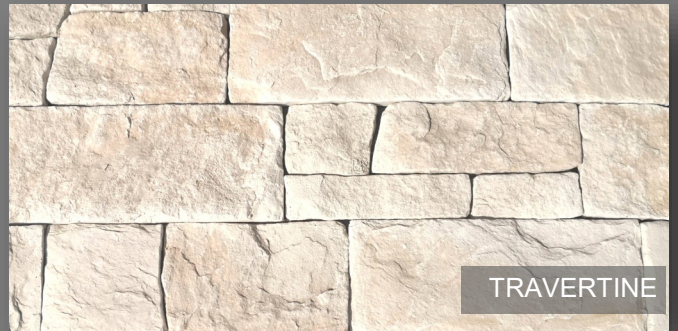
January 2023



# CHOOSE YOUR COLOUR



LIMESTONE



TRAVERTINE



SANDSTONE



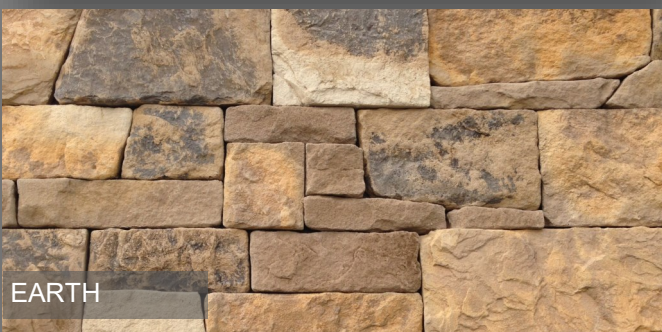
NATURAL GREY



GRANITE



SLATE



EARTH



BLUESTONE

Commonly blended colours for a contrasted finish are

Limestone & Travertine - Sandstone & Natural Grey - Earth & Bluestone

The product colours in this booklet are as accurate as current photography & printing techniques allow. We suggest you look at actual samples for a better idea and selection.



# DRY STACK

Dry Stacked wall cladding can add a rustic look of old world charm when installed with mortar joints. For a more modern design, install without mortar joints (dry stacked), which brings the look of quality craftsmanship and is fast becoming the latest timeless trend.



Sandstone



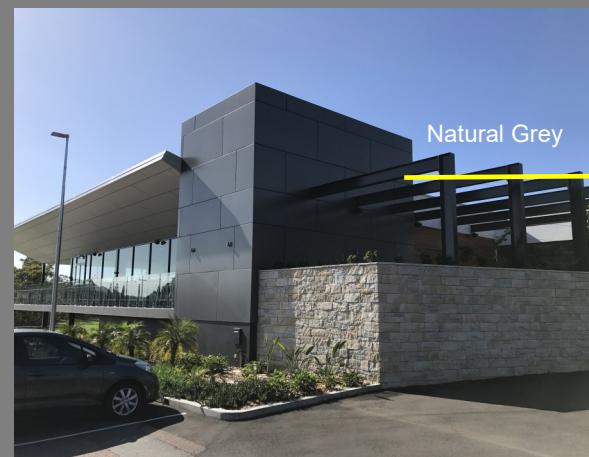
Granite



Travertine



Earth



Natural Grey



Bluestone



Slate



Natural Grey

For more project images  
visit our image library at  
[www.dropbox.com/sh/bnwccluupt0urt/  
AAB4-mUlrNvkFSO6qd6MJ\\_e\\_Pa?dl=0](https://www.dropbox.com/sh/bnwccluupt0urt/AAB4-mUlrNvkFSO6qd6MJ_e_Pa?dl=0)

Or  
simply scan this QR code





Sandstone



Bluestone



Natural Grey



Limestone



# DRY STACK

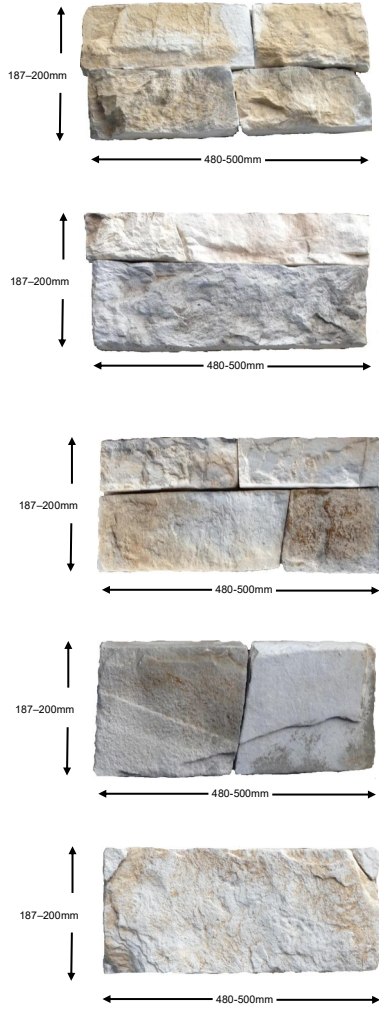
Order Multiples - Bodies

0.6m<sup>2</sup> per case

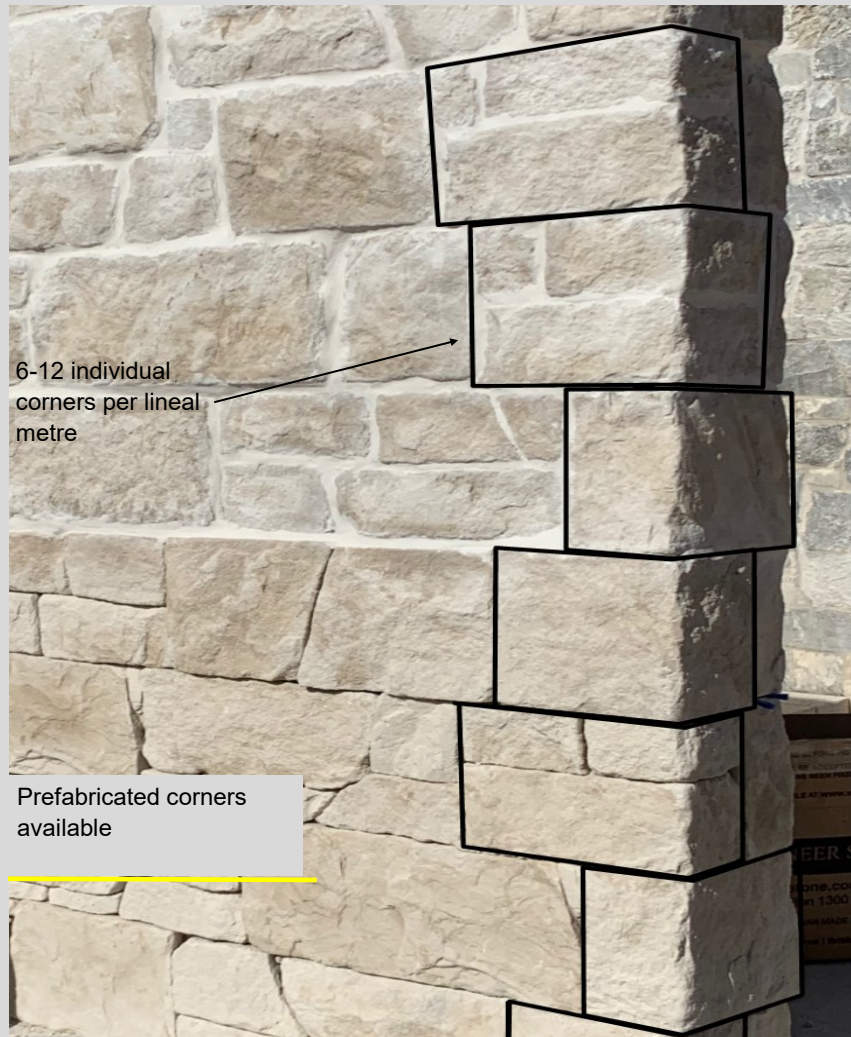
21.6m<sup>2</sup> per pallet

Order Multiples - Corners

1 lineal metre per case (inc 12mm mortar joint)



Approximate size of panels



Limestone



Slate



Bluestone



Sandstone



Natural Grey



Earth



Granite



Travertine

## Capping to suit each colour

Size Approx. 490-510mmL x 290mmW x 40mmH

**Joint Width;** The Dry Stacked collection has been designed to be installed with either a dry joint or an 8-12mm mortar/grout joint. When applying the stones use timber or plastic dowels/wedges to keep the joints evenly spaced. Due to the nature of the product stones will vary in size and may need extra wedges to allow for height variation.

### Installation tips;

- If your application requires corners, apply these first alternating the long & short return in opposite directions.
- After corner pieces have been applied, apply the bodies 1 layer at a time, working towards the edge/centre.
- Colour, size and texture variation is an essential aspect of a natural looking stone wall. Select stone from different boxes and lay out across your job site to ensure you gain this look. The visual effect will be enhanced by an overall natural mixed presentation. Cut or trim the stones using a hammer & bolster, wet saw or angle grinder with diamond blade attached.

### Webbed panel sizes:

185-200mm high x 470-500mm long x 15-30mm thick

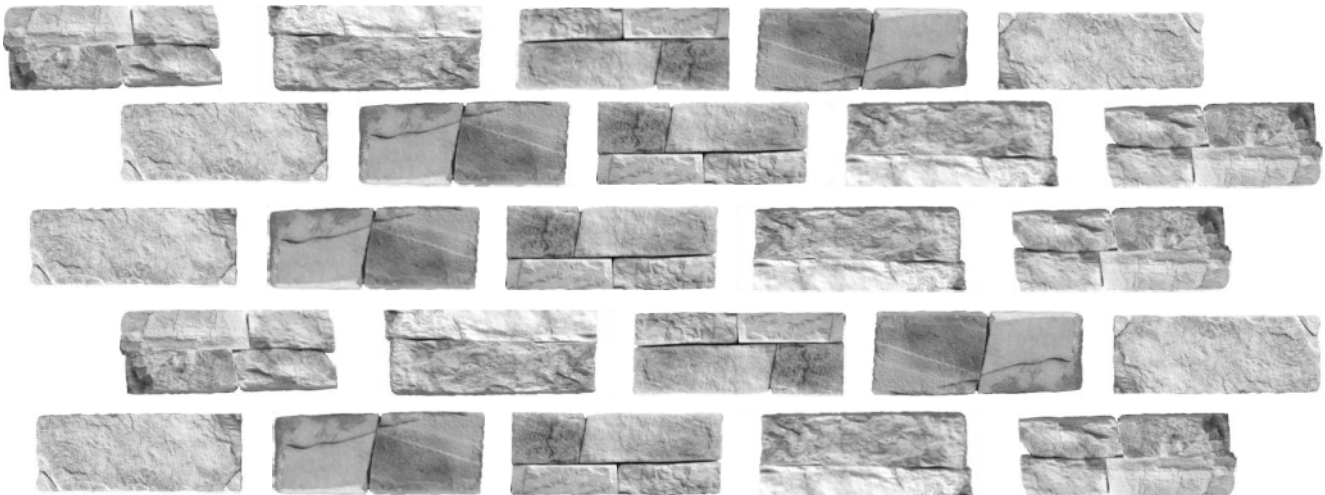
Individual stones attached to the webbing vary in sizes;

Height approx.; 40, 80, 100,120,160 & 200mm

Length; Random ranging from 50mm-500mm

### **Individual stones are held together with flexible webbing.**

Sample Installation pattern – like brick work, avoid straight vertical lines when applying the webbed panels



**If installing with Dry Joint:** Please ensure either the wall or adhesive are a dark colour before starting. This can be done by purchasing a dark tile adhesive or tinting adhesive mortar with black oxide (check with your local glue supplier). This will help cast a shadow between stones giving a deep solid dry stone look. The Dry Stacked collection has been designed to have irregular edges to give a rustic appeal. This will create small voids between some sections. Take time once the pattern is laid to cut thin stones to fill small gaps between the larger joints. This is very important, it will break up the pattern and provide the perfect hand crafted stone masonry look.

**If installing with Mortar joint:** Pointing mortar or tile grout can be used to fill the joints. One of the easiest & fastest ways to fill the joints is with a piping gun or piping bag. Purchase your silicon piping bag from Veneer Stone by calling 1300984572 or email [info@veneerstone.com.au](mailto:info@veneerstone.com.au)

To retain the original fresh quarried look we suggest sealing the stone. If you would like the stone to mellow slightly and gain the European look after years of harsh weathering don't seal the product.

For more information visit our website at [www.veneerstone.com.au](http://www.veneerstone.com.au) or call us on 1300 984 572

# DESIGN



## UNPRECEDENTED STYLE

### Contemporary & Classic

Our stunning collection of veneers are suitable for tiling over various internal and external surfaces. Both contemporary & classic designs coupled with superior craftsmanship come together to create the perfect solution for your stone walling with less impact on the environment.

## ENDURING QUALITY

### Perfected by nature

The harsh Australian climate only enhances the natural beauty of Veneer Stone. Unsealed, our stone simply gets better with age bringing the European look from years of weathering. To retain the fresh quarried look and enhance the natural colours seal the stone with a penetrating silicon based sealer.

## TIMELESS DESIGN

### Designed in Australia for Australia

With a wide spectrum of natural colours and textures to choose from our stone tiles have been designed based on Australian styles and traditional colours from SA Limestone to the Central Coast Sandstone and Victorian Bluestone.

**Dry Stack Travertine**



## Engineered by man

We carefully blend crushed sandstone with less than 1% natural colour pigments to create the distinctive look and relaxed feel of solid natural stone walling with a fraction of the weight. All products come in tile form and range from 20-43mm in thickness. Pre-fabricated corners and capping are available for all products and are highly recommended for use

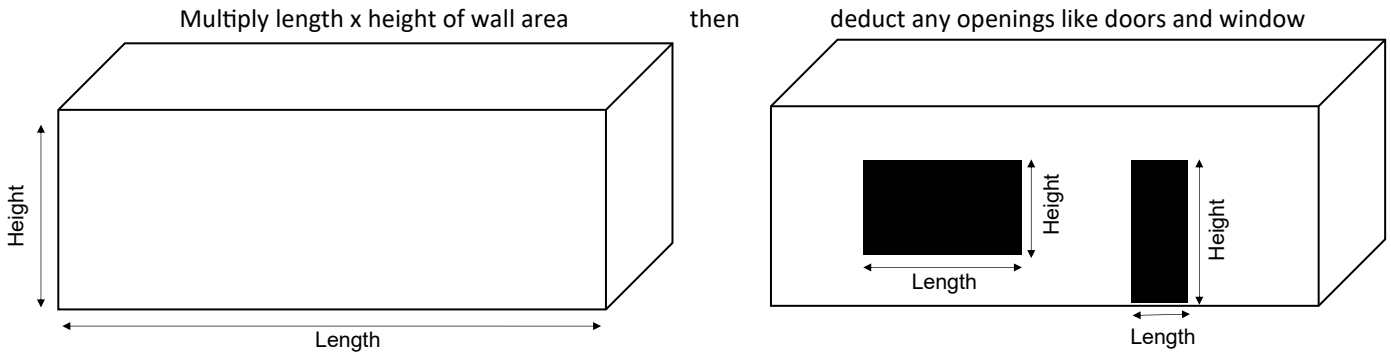


# Estimating Stone Required

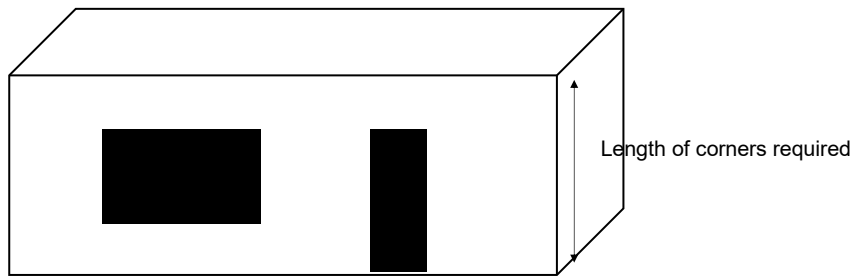


When installing with dry joints (dry stacked) add an extra 10-15% to allow for extra cuts and waste.

## BODIES: Calculate the total surface area by square metre



**CORNERS: Calculate the lineal metres of corner stones** required by measuring all external corners from top to bottom. Please note 1 lineal metre of corners equates to approximately 0.2m<sup>2</sup> of surface area (deductible off bodies)



## RANDOM SHADE VARIATION

Extreme colour and texture variation will occur from piece to piece and within each batch for a random look. The look of the final installation will be unique. Please review the range of products before making your final selection.

## APPLICATION

Suitable for interior and exterior walls, Veneer Stone can be installed around fireplaces, though no closer than 18" to a naked flame. Veneer Stone can also be installed around wet areas, however, continued exposure to chlorine and other chemicals may eventually affect the colouration of the products. When frequently exposed to water, we recommend protection with VenSeal Ultra WB sealer.

WEIGHT - all weights are approximate

	Bodies	Corners
Dry Stack Range	50-60kg/m <sup>2</sup>	27kg

This collection can be produced thinner to drop the weight down to approx. 32kg/m<sup>2</sup> (minimum 40m<sup>2</sup>)

## Orders and Customer Support

Phone 02 4606 4907

Email: [admin@veneerstone.com.au](mailto:admin@veneerstone.com.au)

Website: [www.veneerstone.com.au](http://www.veneerstone.com.au)

Facebook: <https://www.facebook.com/veneerstone/>

Instagram: <https://www.instagram.com/veneerstoneaustralia/>

NSW Plant Address: 15 Technology Drive Appin NSW

SA Plant Address: Lot 22 Aldinga Road, Willunga SA

VIC Warehouse; Dandenong, Melbourne VIC